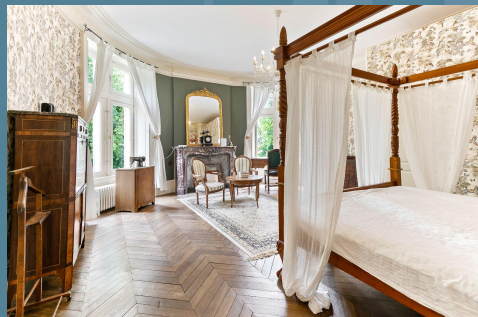


# Château

COLIVING & COWORKING



OpenCraft  
23 - 30 June 2025 - Normandy, France



# THE REGION

*Breathtaking Normandy*





## Normandy, France

The destination has it all:

- Only 2h45 Paris by train or 3h by car
- Beautiful nature with lush fields, coastal views and white cliffs
- Rich cultural heritage and gastronomy
- Iconic architecture and small villages
- Historic and international landmarks



# THE PROPERTY

*A part of French Heritage*







Welcome to our home, a 12th century castle designed with all the necessary comforts of the modern world.

We offer the space where remote workers feel at home, yet that they are in a magical place, away from everything: breakfast in the 12th century dining room, activities in the private park or at the nearby beaches, a dinner by the bonfire the perfect environment to create memories.!



The property includes 2 main buildings, 1 min away from each other:

- The Castle
- The Manor

Located on 80 hectares of private property including:

- a campfire & barbecue facilities
- 50sqm tent that can be used for outdoor activities and meals
- gym space & tennis court





## The Castle features:

- 10 double rooms and 4 single rooms - 9 bathrooms
- Fully equipped kitchen with storage and fridge space
- Small breakfast kitchen
- Large dining room fitting 25 guests
- Spacious living room with soft seating, a large movie screen and a fireplace
- Private call rooms and a lot of cosy nooks
- Laundry & Tumble dryer
- Gym, foosball and other games



## The Manor is composed of:

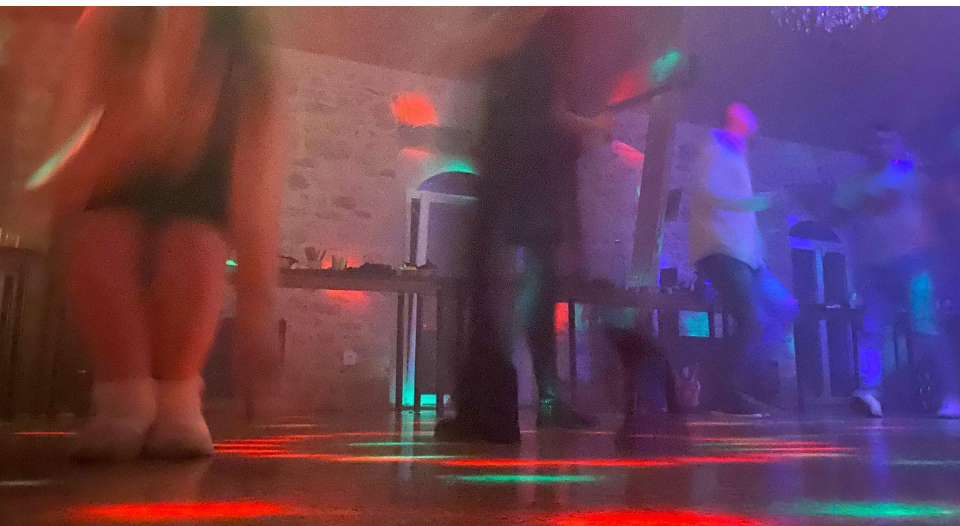
- a total of 4 bedrooms, 4 bathrooms, 2 kitchens—separated in 2 apartments
- 150sqm all-equipped Workspace with special foldable tables, that can easily be transformed into a reception space, yoga room, party space, home cinema with big screen etc.





## The workspace features:

- fast and reliable wifi
- big desks (seating 12-14 people)
- ergonomic office chairs
- standing desk, screen monitors, printer/scanner, paperboard
- 3 call rooms
- soft seating and even hammock swings!
- 2 WCs
- coffee & tea station
- Books in many languages



## You can also use it as an event space:

- Large projection screen
- AV equipment : projector, sound system
- Karaoke machine
- Party lights & smoke machine

We also have yoga mats, sport equipment and board games that can be used in this space.







# THE ROOMS

*Large, bright & beautiful*











# THE MANOR







Wanna keep the budget at bay?

Too complicated to cater to different diets?

No problem! We have equipped kitchens and loads of fridge & shelf space for everyone to be in charge of their own meals.

Big Supermarket 7min by car, online orders & deliveries possible

We also have community management tools and practices for splitting people in groups and helping them cook group meals or dividing into smaller groups according to their diets and cooking on rotation. Let us know if you need any help/ideas on how to facilitate that seamlessly







## Need some help with group meals

### At the property

- we have bbq facilities
- raclette machines
- can help organise wine tasting & cheese pairing evening with a sommelier
- can organise an interactive French crepes buffet for you "make your own crepe" style
- organise a seafood feast
- bring a chef in for an evening or order a catering services



### Outside the property

- there are a number of restaurants in the range of 7min to 30min drive from the Chateau
- there is a bar on the marshes 10min drive away
- cafes, creperies, bakeries and brunch places 7-10min drive
- 

Happy to recommend places and book for you!





## Drinks

### Available throughout the day

- Coffee and tea in the small kitchen and main kitchen
- filtered water and a machine to make sparkling water

### We'd prefer that you organize your drink stock:

2 fridges are available to store soft drinks & beers that can be ordered & delivered by the nearby supermarket.

- We can recommend a wine list from a [local provider](#) (she can also come on spot for a tasting with her wine truck).
- Cider is big in the region, so it's widely available in any shops.
- For non-alcoholic, here are local producers of [kombucha](#), and [sodas](#)





## Activities (optional)

If you wish we can organise and facilitate fun games and activities for you

### On the property

- Amongs us LIVE - designed especially for Chateau Coliving
- Murder Mystery Evening (20 Euro pp)
- Karaoke
- Camp fire
- Chat'Olympics
- Board Game nights & Championships

### Outside the property

- canoeing
- sand-sailing
- cider tastings
- day trips (like Mont Saint Michel or Bayeaux)
- beach days
- visit of local museums or cultural si





See you in June?





L'Isle Marie  
50360 Picauville  
[Maps](#)



More pictures?  
About the region?  
[Dream on](#)



Read our T&C  
[Website](#)

*Château*  
COLIVING & COWORKING